

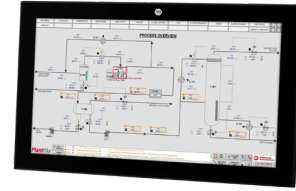
ASEM 6300P Panel PC

Features and Benefits

- Available in display sizes from 12.1" to 24"
- Resolutions include FHD / SXGA / XGA / WXGA
- Available in both Standard and Low Profile bezels
- Aluminum and glass bezel units support various resolutions, including full high definition displays
- Low Profile units are available with the following bezel variants:
 - Aluminum
 - Aluminum Glass True Flat
 - Stainless steel widescreen IP69K (analog resistive) with replaceable blue food grade gasket
- Analog resistive and projected capacitive (for multitouch operation)
- Four Ethernet 10/100/1000 Mbps ports
- Supports "Jumbo Frame" and "Wake on LAN" network standards
- Available with Microsoft Windows 10 IoT Enterprise 2019 LTSC
- Variations available with long distance support for up to two additional displays
- Mass storage types up to 1 TB that include mSATA, SSD SATA III, CFAST (up to 128 GB)
- Up to 32 GB of SODIMM DDR4 RAM
- USB variations of 1x USB 2.0 (Type A) front and rear and up to 3x USB 3.0 rear (Type-A)
- 1 RS-232 (DB9M) serial port
- 1 x DVI-D video output
- IP65/IP69K (model dependent)
- Fanless construction
- Additional options in TPM, PCI Expansion Slots, additional communications
- 24V DC (18V to 32V DC) isolated power
- Operating temperature 0°C to 50°C
- CE, c-UL-us LISTED (61010), RCM approvals
- ThinManager®-ready BIOS preinstalled



6300P Stainless Steel Panel PC



6300P Low Profile Panel PC (Front)



Food Grade Gasket



6300P Low Profile Panel PC (Back)

ASEM™ 6300 is a complete portfolio of open architecture industrial PCs, thin clients and monitors. This broad and adaptable line offers the flexibility you need to meet your specific performance requirements.

The ASEM 6300P Panel PCs are based on the seventh generation Core i3, i5 and i7 Intel Kaby Lake H and Intel Celeron Skylake processors to handle complex industrial applications. They feature single touch analog resistive or multitouch projected capacitive (PCAP) touch screens for enhanced operator productivity. These powerful Panel PCs are available in a variety of display sizes and resolutions, with options of either Standard or Low Profile bezels. PCAP units can be ordered with brandless front panels. Both offer resolutions up to full high definition.





IP65/IP66/IP69K (model dependent) environmental protection makes the ASEM 6300P Panel PC an excellent match for washdown applications such as food processing and life sciences. Fanless construction helps to ensure low maintenance operation and enhance longevity.

The ASEM 6300P Panel PC can be ordered with Windows IoT Enterprise 2019 LTSC or with no operating system to allow users to load their own. It offers an "all in one" motherboard helping to provide reliability in shock and vibration prone environments. It includes four Ethernet ports and supports "Jumbo Frame" and "Wake on LAN" network standards making it easy to incorporate into your existing systems.

Plant floor environments are demanding. ASEM Panel PCs are a solid match for applications requiring a high performance Human Machine Interface (HMI). This product family integrates completely with our FactoryTalk® View SE and FactoryTalk View ME software for seamless assimilation within your facility. The portfolio has various design options available making this robust product family a great choice for plant floor environments.

ASEM 6300P Panel PC

	Standard Bezel Aluminum	Low Profile Bezel Aluminum and Aluminum Glass True Flat
LED backlight TFT LCD	12.1" - 1024x768* 15.0" - 1024x768 17" - 1280x1024 19" - 1280x1024	12.1" W - 1280x800 - Stainless Steel 15.6" W - 1920x1080 18.5" W - 1920x1080 21.5" W - 1920x1080 24" W - 1920x1080
Touch screen	Analog Resistive	P-CAP Multitouch Aluminum Glass True Flat or Analog Resistive - Aluminum
Protection grade	Aluminum Bezel - IP65 / IP66 (model dependent) - Stainless Steel Bezel - IP69K	
Processor (Stainless steel bezel only available with i5 processor)	Intel Celeron G3900E 2.40 GHz, 2 cores/2 threads, 2 MB L2 smart cache, soldered Intel Core i3-7100E 2.9 GHz, 2 cores/4 threads, 3 MB smart cache, soldered Intel Core i5-7440EQ, 2.90 GHz (3.60 GHz Turbo), 6 MB smart cache, 4 cores - 4 threads Intel Core i7-7820EQ 3.0 GHz (3.7 GHz Turbo), 4 cores/8 threads, 8 MB smart cache	
Chipset	Intel HM170 PCH (Platform Controller Hub) Intel HM175 PCH (Platform Controller Hub) - Included into processor chip	
Video controller	Intel HD Graphics 510 integrated into Intel Celeron microprocessor, 950MHz Intel HD Graphics 630 integrated in i3-7100E, 350/950 MHz Clock Intel HD Graphics 630 integrated in i5-7440EQ / i7-7820EQ, 350 MHz/1 GHz Clock	
System memory - RAM	4 GB/8 GB/16 GB/32 GB (2 x SODIMM DDR4-2400 module) Stainless steel bezel only available with 8 GB	
Mass storage	1 x bootable up to 128 GB CFAST SATA III slot onboard with external front access 1 x onboard connector for direct insertion of mSATA up to 1 TB SSD SATA III 1 x onboard connector for 2.5" SSD SATA III up to 1 TB	
LAN	4 x Ethernet 10/100/1000 Mbps (RJ45 - 3 x Intel I210, 1 x Intel I219-LM) Stainless steel bezel - 3 x Ethernet 10/100/1000 Mbps (RJ45 - 3 x Intel I210, 1 x Intel I219-LM)	
USB (Number of USB ports is model dependent)	3 x USB 3.0 rear (Type-A) 2 x USB 2.0 rear (Type-A) 1 x USB 2.0 front (Type-A)	3 x USB 3.0 rear (Type-A) 2 x USB 2.0 rear (Type-A)
Serial	1 x RS232 (DB9M)	
Video output	1 x DVI-D	
Expansion slots	1 x PCIe x4 (5 Gb/s)	
Power	24V DC (18 to 32V DC) isolated	
Certified operating system	Microsoft® Windows 10 IoT Enterprise 2019 64 bit	
Operating temperature	Operating temperature: 0°C to 50°C with Celeron/Core i3 processor, 0°C to 45°C with Core i7 processor	
Approvals	CE (EN 61326-1, EN 61010-1, EN 61010-2-201), cULus LISTED (UL61010), RCM	

Connect with us.    

rockwellautomation.com ————— expanding human possibility®

AMERICAS: Rockwell Automation, 1201 South Second Street, Milwaukee, WI 53204-2496 USA, Tel: (1) 414.382.2000, Fax: (1) 414.382.4444

EUROPE/MIDDLE EAST/AFRICA: Rockwell Automation NV, Pegasus Park, De Kleetlaan 12a, 1831 Diegem, Belgium, Tel: (32) 2663 0600, Fax: (32) 2 663 0640

ASIA PACIFIC: Rockwell Automation SEA Pte Ltd, 2 Corporation Road, #04-05, Main Lobby, Corporation Place, Singapore 618494, Tel: (65) 6510 6608, FAX: (65) 6510 6699

UNITED KINGDOM: Rockwell Automation Ltd., Pitfield, Kiln Farm, Milton Keynes, MK11 3DR, United Kingdom, Tel: (44)(1908) 838-800, Fax: (44)(1908) 261-917

Allen-Bradley, ASEM, expanding human possibility, FactoryTalk, Rockwell Automation and ThinManager are trademarks of Rockwell Automation, Inc.

Microsoft is a trademark of Microsoft Corporation.

Trademarks not belonging to Rockwell Automation are property of their respective companies

Publication 6300P-PP001E-EN-P- August 2023 | Supersedes Publication 6300P-PP001D-EN-P December 2021

Copyright © 2023 Rockwell Automation, Inc. All Rights Reserved. Printed in USA.